

1 3

KEEPING IT CLEAN

MOPS

SECTION TABLE OF CONTENTS

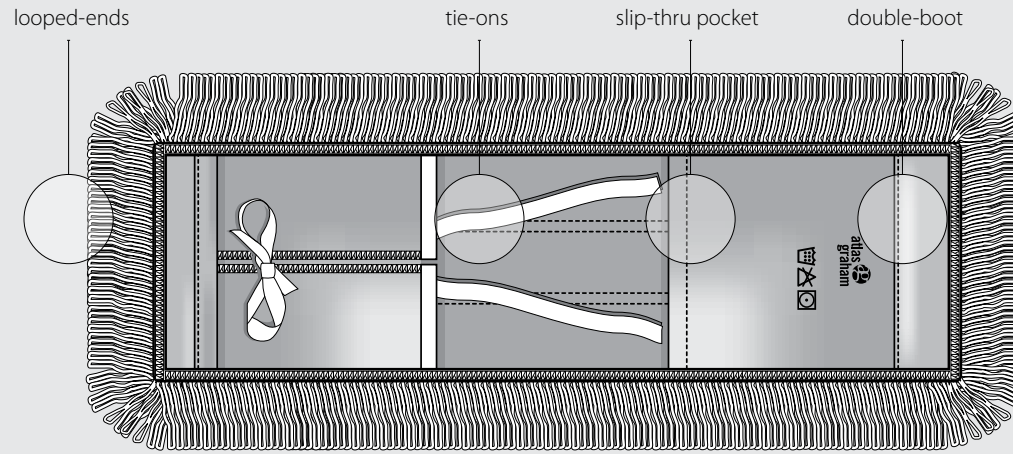
Dust & wet mop selection process	42
Dust mops	
Product map	45
Signature mops	46
Core mops	49
Value mops	50
Handles & frames	51
Wet mops	
Choosing the right wet mop	52
Product map	53
Signature mops	54
Core mops	60
Value mops	62
Mini system	64
Specialty surface	65
Finish applicators	66
Handles	68
Miscellaneous	
Sponge mops	70
Floor signs	70
Neutralizer	70
Scrubbers	71



DUST MOPPING

Dust mop before wet mopping

Dust mopping removes dust and dirt, reducing the frequency and cost of labour-intensive procedures such as floor finishing. Indoor air quality also improves because harmful pollutants are removed before they become transported into the building's HVAC system.



Polyester backing undergoes less than 1% shrinkage when laundered, providing a snug fit for the life of the mop.

SIZE

For smooth floors in open areas or long corridors, use a 36- to 60-inch mop to cover more surface area.

For smaller areas such as classrooms with lots of obstructions, use a smaller, more manoeuvrable size such as an 18- or 24-inch dust mop.

DIRT LEVEL

The amount of dust and dirt on the floor is a critical factor in determining which type of dust mop to use.

Treated mops (typically cotton) are best for areas with heavy amounts of dust such as in an industrial or warehouse facility.

Static charged dust mops (untreated) are best for facilities where chemical use is discouraged such as schools or hospitals.

LAUNDERABILITY

Whether or not a dust mop is going to be laundered is often an overlooked factor. Synthetic blended yarns offer the best durability and, therefore, the best launderability.

To achieve top laundry performance, choose a synthetic mop that is made of either heat-set or looped-end yarn.

BUDGET

Always buy the best dust mop the budget can afford. Typically, dust mops last a long time and in the big picture they are not expensive items to own or operate.

Synthetic blended yarns require a higher initial investment, but offer a lower overall cost of operation because they are more durable and can be laundered.

Cotton blended yarns provide lower initial costs, but are not as durable because they are semi-disposable and laundering is not recommended.

70% to 80% of interior soil is brought into a facility from foot traffic. It costs four to five times more to remove dirt from inside the building than it does to stop it at the door. Frequent dust mopping is not only faster than wet mopping, it is also a more ergonomic operation to perform.

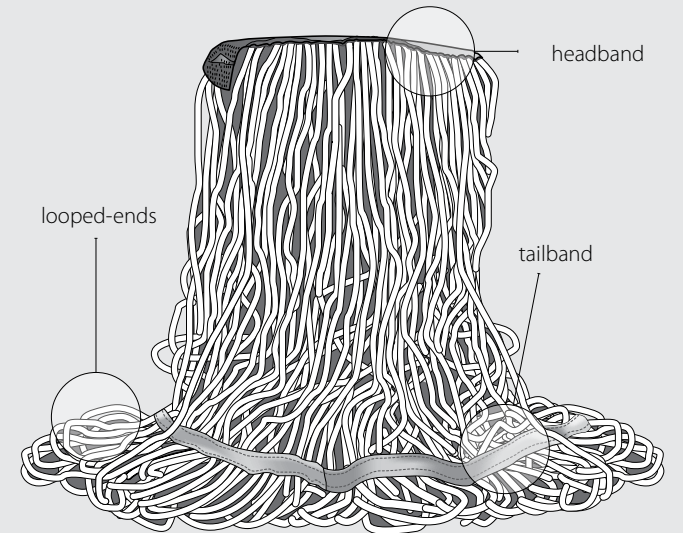
WET MOPPING

Match the mop to the application

Choosing the right wet mop for the job at hand depends on the intended application. A wet mop is a very versatile tool that can be used in different situations, including spill pick-up, damp mopping, floor washing and floor finishing.

WHERE WET MOPS ARE USED

- Choose a mop manufactured with a highly absorbent, cotton blended yarn to quickly absorb spills, reducing the risk of injury. Less time mopping also means less labour, making the task more efficient.
- Mops are also used for general damp mopping of floors to remove dried-on dirt. For these important tasks, choose a mop with a yarn that balances absorbent and release features with your budget.
- For applying floor finishes, germicides/disinfectants and waxes, use a synthetic yarn that will quickly release liquid onto the floor. Rayon or nylon are preferred for finishing/stripping/coating applications.
- A synthetic blended mop is a better choice for washing a floor where large amounts of liquid are dispersed onto the floor.
- For hazardous material spill cleanup, use a highly absorbent disposable mop.



SURFACE/AREA

For smooth floor surfaces, any traditional wet mop will achieve the intended goal. The larger the mop, the more surface area is in contact with the floor, the more efficient and less costly the task becomes to perform.

For nonslip flooring with rough surfaces, a non-linting knitted cotton or fleece blended mop is the ideal choice to ensure maximum return on your cleaning tool investment.

DIRT LEVEL

For large amounts of dirt and water, a mop yarn with high-absorption qualities such as cotton or rayon-blended yarn is the right choice. Cotton and rayon yarns, are by nature, absorbent and pick up large amounts of liquid quickly.

Cotton holds water. Rayon releases water.

Both yarns are highly absorbent.

LAUNDERABILITY

Synthetic blended yarns offer the best durability and launderability. Cotton blended yarns have low upfront costs, but do not provide the same level of launderability as synthetic yarns do.

Looped-end mops are also more durable and launderable than their cut-end counterparts. The looped-ends keep the yarn from unravelling and don't lint-off as much in the drying cycle.

BUDGET

Synthetic yarns are typically less costly in the long run because they are more durable and launderable than cotton or rayon-blended yarns.

Cotton and rayon yarns offer a low upfront cost, but do not launder well and will need to be replaced more often. These mops are considered semi-disposable.

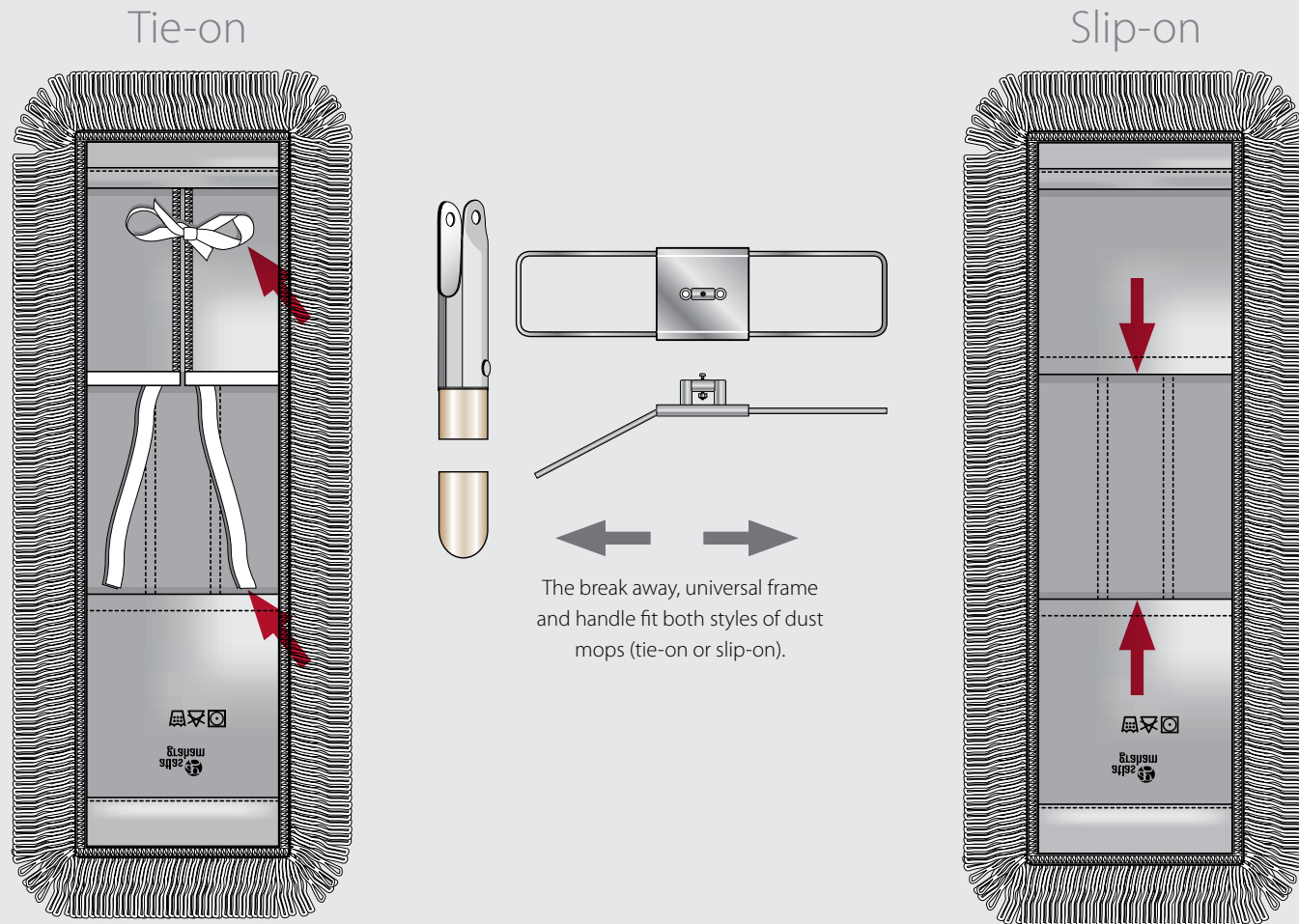
Always consider the intended application before price. The wrong mop regardless of cost will not perform well. As a result, labour costs will increase.

Wet mopping plays a big role in lowering building maintenance costs and ensuring a safe working environment. Match the size of the mop to the worker's size and the area being cleaned.

DUST MOPS

Choosing the right style

A little time spent evaluating the different styles and materials of dust mops will ensure you get the best performance and value. Other features such as looped-end and double-boot construction provide extra durability.



CUT-END

Cut-end mops can be laundered, but not as well as the looped-end style. However, some pros like the fact the ends fray over time for added loft.



LOOPED-END

The Astrolene and the Microloop mops are both available in looped-end construction for better durability when laundering.



DOUBLE-BOOT

Extra fabric is added to the wear points of the mop to increase life.



TIE-ON STYLE

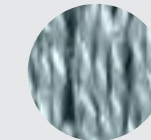
Tie-ons provide a custom, no-slip fit after each laundry cycle. Note: The mop actually has one slip-on pocket and one tie-on pocket to minimize mop installation time.

DUST MOP PRODUCT MAP

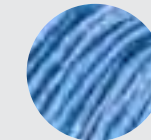
A mop for every condition, every budget

Atlas Graham offers launderable, semi-disposable and disposable dust mops to suit every budget and every market.

● SIGNATURE MOPS



MICROLOOP™



ASTROLENE™

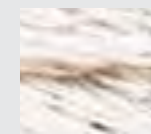
- Heat-set yarn for the right combination of strength and launderability.
- Double-booted to reinforce stress points where frame comes in contact with mop.
- Blended yarn maximizes pickup.

All our signature dust mops are designed for facilities where a high level of cleanliness and launderability is required. Excellent choice for health-care and commercial facilities.

■ CORE MOPS



ELECTROSTAT™

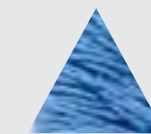


COTTON-INDUSTRIAL

- Heat-set yarn for strength and laundry performance.
- Reinforced, double-boot stress points maximize durability.

Our core dust mops are designed for facilities where a high level of clean is required with or without using dust mop treatment. Use these mops in educational, commercial or industrial facilities.

▲ VALUE-CONSCIOUS MOPS



MULTISTAT™



COTTON VALUE

- Blended non-heat-set yarns for economical use.
- Single-boot construction for good performance.

Our value-conscious dust mops are designed for facilities where daily or weekly laundering is not possible. These mops are best for industrial, food service or hospitality facilities.

◆ SPECIALTY MOPS



BIOMOP™

Biomop's biodegradable disposable dusting sheets offer a perfect, single-use, dust mopping solution where maximum cleanliness is required and when laundering is not practical or possible. These mops are used in health-care and commercial settings. See the Purasolutions™ section for additional information.

● **MICROLOOP™**

A new microfibre dust mop

Microfibre synthetic-blended yarn increases the mop's effectiveness to hold dust because more fibres come in contact with the floor on a microscopic level. The result is a deeper clean on smooth floors.



All the benefits of microfibre in a traditional dust mop. Service life: 75-200 laundry cycles with proper care.

● **MICROLOOP™**

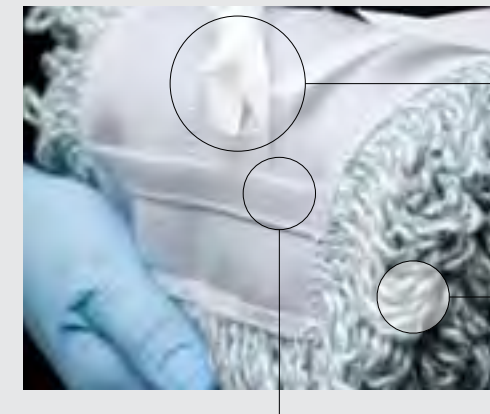
Universal tie-on fits any five-inch frame

The looped-end yarn made from a 50/50 synthetic/microfibre blend offers improved cleaning capability. The dust mop is for fine dust on smooth floors.

IMPROVED LAUNDERABILITY

The addition of microfibre to synthetic mop yarn increases the mop's effectiveness on smooth floors. The quick-drying attribute of microfibre also reduces energy consumption during the laundry cycle – ideal for customers on energy reduction programs.

This dust mop is ideal for institutions that launder mops. The looped-ends reduce lint-off during laundry cycles.



Universal tie-on fits any five-inch frame on the market.

Our universal tie-on style allows the mop to fit 18- to 48-inch break away or rigid 5-inch dust mop frames. The tie-on style allows a "custom fit" to the frame depending on how tight the user needs it.

Looped-end construction prevents the yarn from linting and fraying, maximizing durability on the floor and in the wash.

The Microloop mop has double-boot construction for extra protection against wear, improving product life.

mop type	colour	18 in.	24 in.	36 in.	48 in.	pack
tie-on	green & white candy stripe	50118	50124	50136	50148	10

● ASTROLENE™

Treated synthetic for top performance

Astrolene mop yarn is a special blend of four different synthetic yarns to provide strength and launderability. The synthetic yarn readily absorbs the treatment for heavier commercial or industrial dust mop applications.



Astrolene's colourfast yarn is heat-set to prevent unravelling and lint-off. Dries in half the time of a traditional cotton dust mop.

treated, mop types	18 in.	24 in.	36 in.	48 in.	pack
slip-on, cut-end	12818	12824	12836	12848	10
tie-on, cut-end	22818	22824	22836	22848	
slip-on, looped-end	32818	32824	32836	32848	
tie-on, looped-end	42818	42824	42836	42848	

Service life: 75-200 laundry cycles with proper care.

DUST MOPS

Untreated synthetic

Synthetic dust mops generate a static charge to pick up dust without the need for dust mop treatment.



■ ELECTRASTAT™

Electrastat nylon yarn is long wearing and launderable for an extended service life. These mops are available in four distinct, bright colours for easy identification when used in segregation programs.

mop type	colour	18 in.	24 in.	36 in.	48 in.	pack
slip-on	blue	15018	15024	15036	15048	10
	green	14818	14824	14836	14848	
	red	14918	14924	14936	14948	
	yellow	15118	15124	15136	15148	
tie-on	blue	25018	25024	25036	25048	
	green	24818	24824	24836	24848	
	red	24918	24924	24936	24948	
	yellow	25118	25124	25136	25148	

Service life: 75-200 laundry cycles with proper care.

▲ MULTISTAT™

Multistat's acrylic-polyester blend yarn is spun with a tighter twist for extended life when used for light to moderate dust mopping. Mops can be cleaned by rinsing out and hanging to dry overnight.

mop type	18 in.	24 in.	36 in.	48 in.	60 in.	pack
tie-on	23418	23424	23436	23448	-	10
	-	-	-	-	23460	5

The Multistat is a semi-disposable dust mop for facilities where laundering is not an option.



COTTON DUST MOPS

Performance & value

Cotton blended dust mops are an economical choice for those dusty industrial jobs where a facility's appearance is a prime consideration.

■ COTTON INDUSTRIAL, TREATED

The blended-cotton industrial dust mops are designed for use in facilities where large volumes of dust are present on smooth floors. These mops are treated with a dust control additive to turn dust into lint and hold it within the mop's yarn. Yarn is heat-set so it can be laundered.



	18 in.	24 in.	36 in.	48 in.	60 in.	pack
slip-on for universal break away frame	12718	12724	12736	12748	-	10
tie-on for 3½ in. rigid frame	14518	14524	14536	14548	-	10
	-	-	-	-	14560	5
tie-on for 5 in. universal break away or rigid frame	22718	22724	22736	22748	-	10

▲ COTTON VALUE, UNTREATED

For general dust mopping duties, these basic mops provide good value. They are easily cleaned by brushing out over a waste can.



untreated	18 in.	24 in.	36 in.	48 in.	60 in.	pack
tie-on	16618	16624	16636	16648	-	10
	-	-	-	-	16660	5

▲ COTTON WEDGE, TREATED

The treated cotton wedge mop is an excellent tool for picking up dust when the area to be mopped is small. Sold complete with a treated 6 by 8 inch wedge shaped dust mop and 48 inch metal powder coated handle.

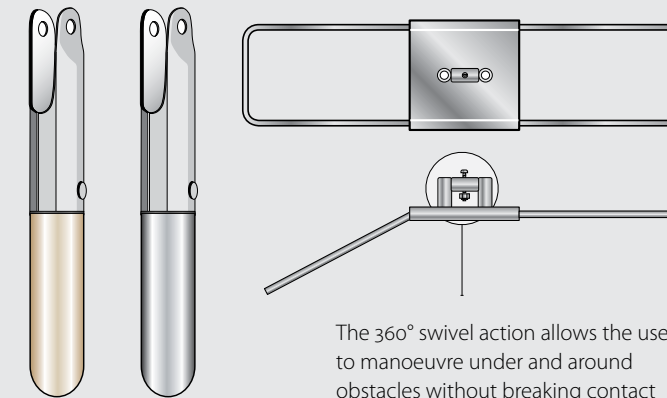


mop type	item	pack
complete	14010	10
refill mop	14310	

UNIVERSAL BREAK AWAY FRAME

The very best in durability

This workhorse is the perfect tool for dust mopping with any five-inch style of dust mop. It's also the most durable frame ever made.



The 360° swivel action allows the user to manoeuvre under and around obstacles without breaking contact with the floor. This keeps all the dust where it belongs: in the mop.

wood handle & frame	size [in]	pack
12618	18	
12624	24	5
12636	36	
12648	48	3

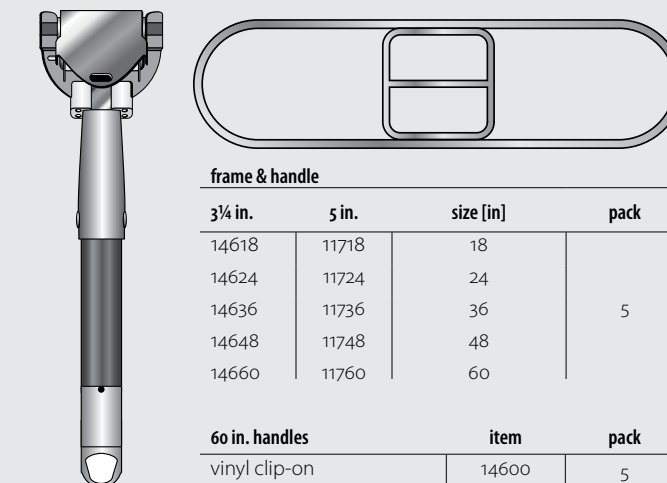
60-in. handles	item	pack
hardwood-swivel	12600	
aluminum-swivel	12602	10

360°
degrees of movement
total fingertip control

RIGID FRAME

Frame & clip-on handle

For tie-on or envelope-style dust mops, a rigid frame and handle are the right choices. These rigid frames come with a vinyl-coated 60-inch handle that clips to the centre bar.



frame & handle			
3¼ in.	5 in.	size [in]	pack
14618	11718	18	
14624	11724	24	
14636	11736	36	5
14648	11748	48	
14660	11760	60	

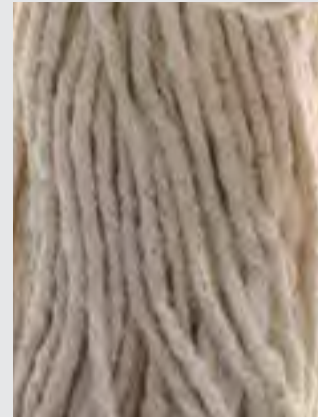
60 in. handles	item	pack
vinyl clip-on	14600	5

180°
degrees of movement
lock-down control
Swivel handle can be locked in place for large, unobstructed areas such as hallways or gymnasium floors.

WET MOPS

Choosing the right wet mop

Spend a little time reading the next two pages. You might discover you're using the wrong mop or you're working way too hard with a mop not optimal for the cleaning task.



DURABILITY

A mop's durability depends on its quality, type of yarn and ability to be laundered many times without degrading performance.

Mops made from a synthetic blend, microfibre or antimicrobial yarn have the greatest durability and highest initial cost. In most cases, they also represent the best value if they are laundered and dried out between uses.

Construction also plays a big part. Look for an all mesh, fast drying synthetic headband, looped-ends, and tailband tape to prevent tangles in the laundry.

ABSORBENCY

The ability for a mop to pick up liquids and hold them is a measure of absorbency. This characteristic is an important performance measure because it means the floor will dry faster.

Mops made from cotton have the best absorbency. Be aware: new cotton mops require conditioning prior to use by placing them in a bucket of cold water for six hours. Our mops of blended cotton and synthetic (Tuffstuff®) are a wise choice for high-traffic areas.

RELEASE

Release is the measure of how quickly the yarn releases liquid to the floor. Higher levels of release mean the mop can be wrung more completely. It also means liquids that are supposed to stay on the floor, such as germicides and finishes, stay on the floor.

For general mopping, release is not the most important characteristic.

Our nylon and rayon mops are used for applying finishes. Because the yarns have closed membranes, very little liquid is absorbed. The fibre remains strong with no lint-off because of the homogeneous nature of the material.

PERFORMANCE

We rate general performance by examining how much the mop is capable of picking up in an application and how long the mop is expected to last.

We believe our new Microloop, Tuffstuff® and Bacstop™ (antimicrobial) mops all offer the best performance under general mopping conditions.

Atlas Graham has many speciality wet mops for all challenging floor surfaces such as rough-cut slate. This rough-surface requires a specially designed mop such as the Ruffstuff™ or the Ruffie™.

WET MOP PRODUCT MAP

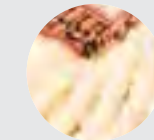
A mop for every condition, every budget

Atlas Graham offers a range of launderable and semi-disposable mops so customers can determine how they see value when evaluating their environmental conditions.

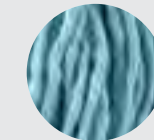
SIGNATURE MOPS



MICROLOOP™



TUFFSTUFF®



BACSTOP™

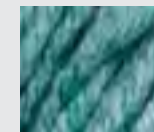
- Best yarns.
- Best construction.
- Best launderability.
- Best durability.
- Best performance.

All our signature mops are designed for general purpose mopping. Premium materials and construction such as looped-ends, tailbands and mesh headbands lead to a service life of 75 to 200 uses when laundered.

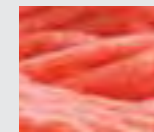
CORE MOPS



TERRALITE™



MEDIPRO™



JANILOOP™



MULTIMATE™

- Standard yarns.
- Standard construction.
- Standard launderability.
- Standard durability.
- Standard performance.

Our core mops were developed for general purpose mopping. Materials and construction such as looped-ends, tailbands and mesh headbands lead to a service life of 25 to 100 uses when laundered.

VALUE-CONSCIOUS MOPS



ECOLOOP™



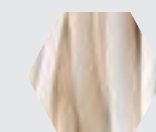
COTTON



RAYON

Most of these mops are designed to be semi-disposable. With proper rinsing and by hanging to dry between uses, they offer good durability when used occasionally. However, because most of these mops have cut-ends, they are not considered launderable. Any mop made with cotton will also have to be conditioned prior to use by placing the mop in a bucket of cold water for six hours. After this break-in period, cotton performs well for general mopping.

SPECIALTY MOPS



ROUGH SURFACE



FLOOR FINISHING



HAZMAT

Use these mops for specialized surfaces or applications. When anti-slip flooring, rough-cut slate or stone has to be mopped, consider rough-surface mops. Floor finishing requires a 100% synthetic fibre such as nylon with a closed membrane. For hazmat (hazardous material response), we suggest our super absorbent SorbX disposable mop.

● **MICROLOOP™ WET**



● **MICROLOOP™ WET**

A new spin on a traditional mop

Who says you can't teach new school thinking to old school veterans? Get the best technical attributes of microfibre in a traditional four-ply, all-synthetic, general purpose wet mop.



MICROFIBRE

Microloop made from synthetic yarn manufactured in Canada is a 50:50 microfibre/synthetic blend. The specially formulated yarn picks up five times its weight in dirt and liquid.

The addition of microfibre increases the mop's effectiveness because more fibres come in contact with the floor on a microscopic level.



MESH HEADBAND

Synthetic mesh allows the mop to breathe and dry quicker between uses to reduce the occurrence of mop rot.

Headbands come in narrow or wide band to fit either the Ez-change style of handle or the Jaws style.



TAILBAND TAPE

Tailband tape prevents tangles and helps the mop keep its shape with wider surface coverage. Tailband tape also helps avoid tangles in the laundry cycle.

The twisted four-ply yarn has excellent tensile strength for improved launderability and durability.



LOOPED-END

Looped-end construction keeps the yarn from fraying and extends the life of the mop when laundering.

Microloop outlasts cut-end mops 8:1.

The service life of Microloop is between 75 and 200 uses depending upon laundry procedures and operating environment.

item	size	band	pack
5005	small	narrow	10
5006	medium		
5007	large		
5015	small	wide	10
5016	medium		
5017	large		

HEADBAND COLOUR

- small
- medium
- large

● TUFFSTUFF™

The right stuff for as long as we can remember

Tuffstuff is the tried and trusted premium wet mop in the Canadian market. It is a colour-coded mop with good overall durability and performance in a general mopping application.

LOOPED-END

- The blended yarn is: cotton and rayon for absorption and polyester for strength and launderability. Tuffstuff outlasts cut-end mops 8:1. Preferred by health-care facilities.
- Looped-end construction eliminates fraying and lint-off. Looped-ends stand up to repeated laundering, so the initial investment is soon recovered with lower replacement costs and reduced labour costs.



TAILBAND

- The tailband feature of a looped-end mop provides a wider, even stroke providing better coverage without lint, gaps or tangles.
- The tape eliminates tangles and keeps the mop neat and tidy when in use or in the laundry cycle. The looped-ends cannot wrap around furniture legs.



HEADBAND

- Tuffstuff's headband is offered in wide or narrow band synthetic woven mesh. The mesh is designed to dry quickly and allow the yarn underneath to breathe, reducing moisture content soon after the mop is used. Atlas Graham knows by experience that other non-mesh headband mops rot if not properly cared for.



Tuffstuff outlasts cotton cut-end mops 8:1. Now that's true value.

TUFFSTUFF NARROW BAND

size	blue	orange	green	yellow	pack
small	1731	1721	1701	41741	10
medium	1732	1722	1702	41742	
large	1733	1723	1703	41743	
x-large	1734	1724	1704	41744	

TUFFSTUFF WIDE BAND

size	blue	orange	green	yellow	pack
mini	1806	1406	1606	-	10
small	1801	1401	1601	41771	
medium	1802	1402	1602	41772	
large	1803	1403	1603	41773	
x-large	1804	1404	1604	41774	

● TUFFSTUFF™

HEADBAND COLOUR

- small
- medium
- large
- x-large



● **BACSTOP™**

Antibacterial protection

Bacstop mops are designed for restaurants, grocery and retail stores or anywhere mopping is done in full view of the public. Testing has determined that the Bacstop lasts at least three times longer than other looped-end mops. The Bacstop's antimicrobial treatment lasts the life of the mop and guards against mop rot.



When a dirty, smelly mop is used in full view of a customer, there is a high "yuck" factor.

Simply smelling something during or before an experience often ties that smell to the experience. This sense of smell can reinforce a positive or negative experience that a customer has in your establishment.

● **BACSTOP™**

Antibacterial defence against mop rot

There is nothing worse for your image than an employee cleaning a floor with a sour-smelling mop. The Bacstop is your defence.

Bacstop yarn is impregnated with an antimicrobial agent that inhibits the growth of bacteria. It's a practical choice wherever mopping is performed in view of the public (for example, in restaurants or retail environments). Bacstop yarn prevents the off-putting odour produced by typical mops when they remain damp for extended periods. This anti-microbial feature extends the life of the mop by combating yarn breakage that can be caused by mop rot.



band	sm	md	lg	xl	pack
narrow	2901	2902	2903	2904	10
wide	2921	2922	2923	2924	

HEADBAND COLOUR

- small
- medium
- large
- x-large

LOOPED-END

Looped-end construction keeps the yarn ends from linting-off. This maximizes the mop's service life when properly laundered.



looped-end



cut-end

■ CORE MOPS

Tried and trusted looped-end mops

These mops are constructed with looped-ends to provide performance where it counts, on the floor and in the laundry cycle.

TERRALITE™

This very strong and durable yarn makes an excellent mop for general washing or spill pickup. The looped-end construction adds longevity to the mop because it can be laundered without the ends fraying.

The yarn is milled using local renewable energy from Canada to reduce the manufacturing and distribution carbon footprint as much as possible. The Terralite Series is manufactured from 70% recycled materials such as PET (pop bottle plastic), and 30% post-consumer rayon and polyester fibres.



band	colour	sm	md	lg	xl	pack
narrow	green	3501	3502	3503	3504	10

MEDIPRO™

Priced right for health institutions, schools and contract cleaners that have access to laundry facilities. All synthetic yarn is durable and reduces the instance of mop rot.



band	colour	sm	md	lg	xl	pack
narrow	blue	2431	2432	2433	2434	10
	green	2321	2322	2323	2324	
	orange	2521	2522	2523	2524	
wide	blue	2441	2442	2443	2444	10
	green	2301	2302	2303	2304	
	orange	2541	2542	2543	2544	

■ CORE MOPS

When a quality looped-end mop is required

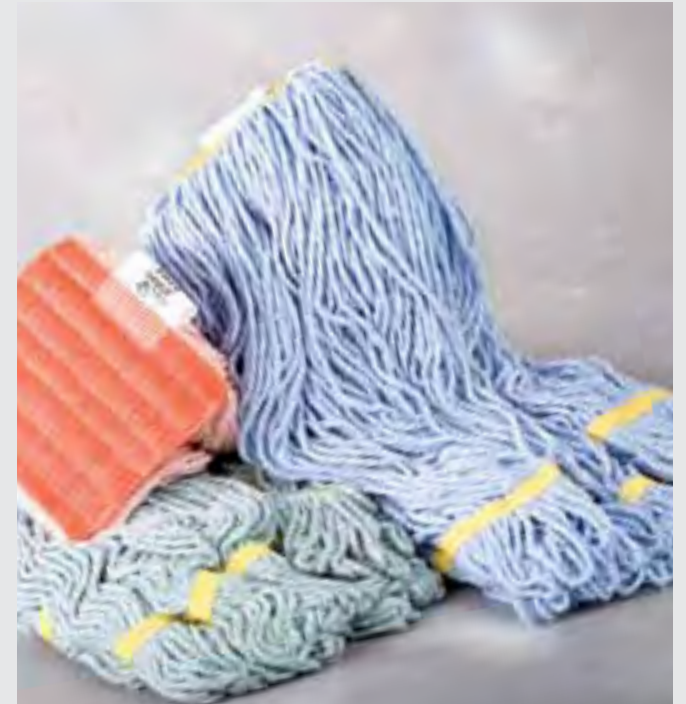
These mops have seen some dirty floors throughout Canada. They are designed to provide good performance when facility managers want a reasonably priced mop that launders well.

JANILOOP™

Janiloop's all-synthetic yarn makes these mops an economical alternative for commercial facilities, schools or anywhere mopping is performed in public.

- Available in three colours and four sizes, in narrow band and wide band styles.
- All-synthetic yarn means excellent chemical and bleach resistance.

band	colour	sm	md	lg	xl	pack
narrow	blue	1881	1882	1883	1884	10
	green	2611	2612	2613	2614	
	orange	2711	2712	2713	2714	
wide	blue	1891	1892	1893	1894	10
	green	2601	2602	2603	2604	
	orange	2701	2702	2703	2704	



MULTIMATE™

Multimate's white synthetic yarn allows the mop to be out on the floor and cleaning up messes faster since there is no "break-in" period required. Designed for use by contractors, convenience stores and grocery stores.



band	colour	sm	md	lg	xl	pack
narrow	white	1767	1768	1769	1770	10
wide		1775	1776	1777	1778	

▲ VALUE MOPS

Traditional quality

When reasonable quality and price for a mop are required for a value-conscious budget. We just can't make a bad wet mop.

ECOLOOP™

The EcoLoop is an economically priced, coloured, looped-end mop, ideal for contractors, grocery stores and convenience stores. The cotton-synthetic blended yarn has a good balance between absorbency and fast liquid release. Note: Available in narrow-band only.

description	sm	md	lg	xl	pack
narrow band	2821	2822	2823	2824	10

Looped-end construction and sewn tailband are features normally found on our Signature and Core mops. This product offers good value.



CLASSIC MOPS

For decades, we have been manufacturing and selling our *Ohio* and *Wonder* 100% cotton mops. Ohio mops have a special bolt and nut connector, and the Wonder has a headband that is sewn together for quick attachment to a Jaws-style, wide-band handle connector.

description	450 g	550 g	650 g	850 g	pack
Ohio	1316	1320	1324	1332	10
Wonder	1916	1920	1924	1932	

60 x 1 1/8 [in]	item	pack
Ohio handle	1360	10

These classic cotton mops are cut-end.



Ohio

Wonder

Note: Use a Jaws handle.

▲ VALUE MOPS

Cotton and rayon

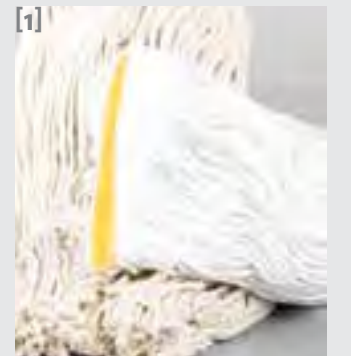
Sometimes a traditional mop just fits the bill. Our economy-priced cotton and rayon wet mops are available in narrow and wide band construction. These mops are considered semi-disposable and should not be laundered.

[1] CUT-END NARROW BAND

size	cotton	rayon	rayon no bag	pack
350 g	1612	4012	14012	
450 g	1616	4016	14016	
550 g	1620	4020	14020	10
650 g	1624	4024	14024	
850 g	1632	4032	14032	

[1] CUT-END WIDE BAND

size	cotton	rayon	pack
350 g	4512	4212	
450 g	4516	4216	
550 g	4520	4220	10
650 g	4524	4224	
850 g	4532	4232	



cotton

rayon

[2] CUT-END [NB] RAYON COLOUR

colour	450 g	550 g	650 g	pack
green	50016	50020	50024	10
blue	54016	54020	54024	

The rayon mop is available in coloured yarn when appearance is important.



rayon



rayon

[3] FAN-FOOT NARROW BAND

size	cotton	rayon	pack
350 g	41612	4112	
450 g	41616	4116	
550 g	41620	4120	10
650 g	41624	4124	
850 g	41632	4132	



cotton

[4] FAN-FOOT WIDE BAND

size	cotton	rayon	pack
450 g	44516	44216	
550 g	44520	44220	10
650 g	44524	44224	
850 g	44532	44232	

Fan-foot mops with a tailband help spread cleaning solution evenly over the floor and eliminate tangles.

CHOOSE COTTON WHEN

- You can spend the time and effort to break in a new cotton mop properly by soaking overnight.

- You want the floor to dry quickly and be put back in service with minimal delay.

CHOOSE RAYON WHEN

- You want economy and don't want the hassle of breaking in a new mop.

- You have time for a wet floor to dry without causing a slip hazard during the process.

● ■ ▲ MINI SYSTEMS

Spot and small area mopping

Much of wet mopping involves small areas such as foyers, stairs and washrooms. These areas see frequent traffic with heavy dirt loading. The Mini System is designed to quickly and efficiently mop small areas.



● TUFFSTUFF™ RINGTAIL ■ JANILOOP™ RINGTAIL

description	colour	item	pack
Tuffstuff ringtail	orange	1405	20
	green	1605	
	blue	1805	
Janiloop ringtail	orange	1415	
	green	1615	
	blue	1815	



▲ WRING-EZY, CUT-END

description	225 g	275 g	350 g	450 g	550 g	pack
cotton	1508	1510	1512	1516	1520	20
rayon	41508	41510	41512	41516	41520	

Ringtail and Wring-Ezy mops have an acme thread.



▲ YACHT MOPS & BUCKET (SOLD SEPARATELY)

Yacht mops are economy-priced, convenient, semi-disposable mops that have cotton or rayon yarn bound by wire to a 54-inch wood handle. For use with a cone-style bucket and wringer.

description	225 g	275 g	350 g	450 g	550 g	pack
cotton	2208	2210	2212	-	-	10
	-	-	-	2216	2220	5
rayon	2308	2310	2312	-	-	10
	-	-	-	2316	2320	5
14L bucket & cone				1505		6
cone only				1506		1

◆ SPECIALTY SURFACE

High traffic, extreme dirt loading

These mops tackle the toughest of conditions, including rough surfaces and loads of grit. These mops can also respond to spills where oil, solvents and other chemicals pose a hazard.

RUFFSTUFF™

Rough, non-skid flooring can be a nightmare to clean with a yarn mop due to lint-off. Ruffstuff eliminates the problem because it is fabricated from fleece material that does not lint. Construction is looped-end to prevent tangling, and the material is absorbent, mildew-resistant and launderable.

description	colour	md	lg	pack
narrow band	blue	81920	81921	10
wide band		81910	81911	



RUFFIE™

The Ruffie is designed for use on non-slip floors. Fabricated from recycled, cotton-poly jersey material (T-shirt cloth), it is both absorbent and non-linting. Looped-end construction ensures long mop life and no frustrating tangles.

description	colour	md	lg	pack
narrow band	white	81898	81899	10

SORBX™ [HAZMAT RESPONSE]

SorbX is our hazardous material spill response mop. It is able to absorb large quantities of liquids. This disposable mop should be kept on hand wherever hazardous chemicals, oils and solvents are stored or used.

description	colour	sm	md	lg	pack
narrow band	white	11916	11920	11924	10



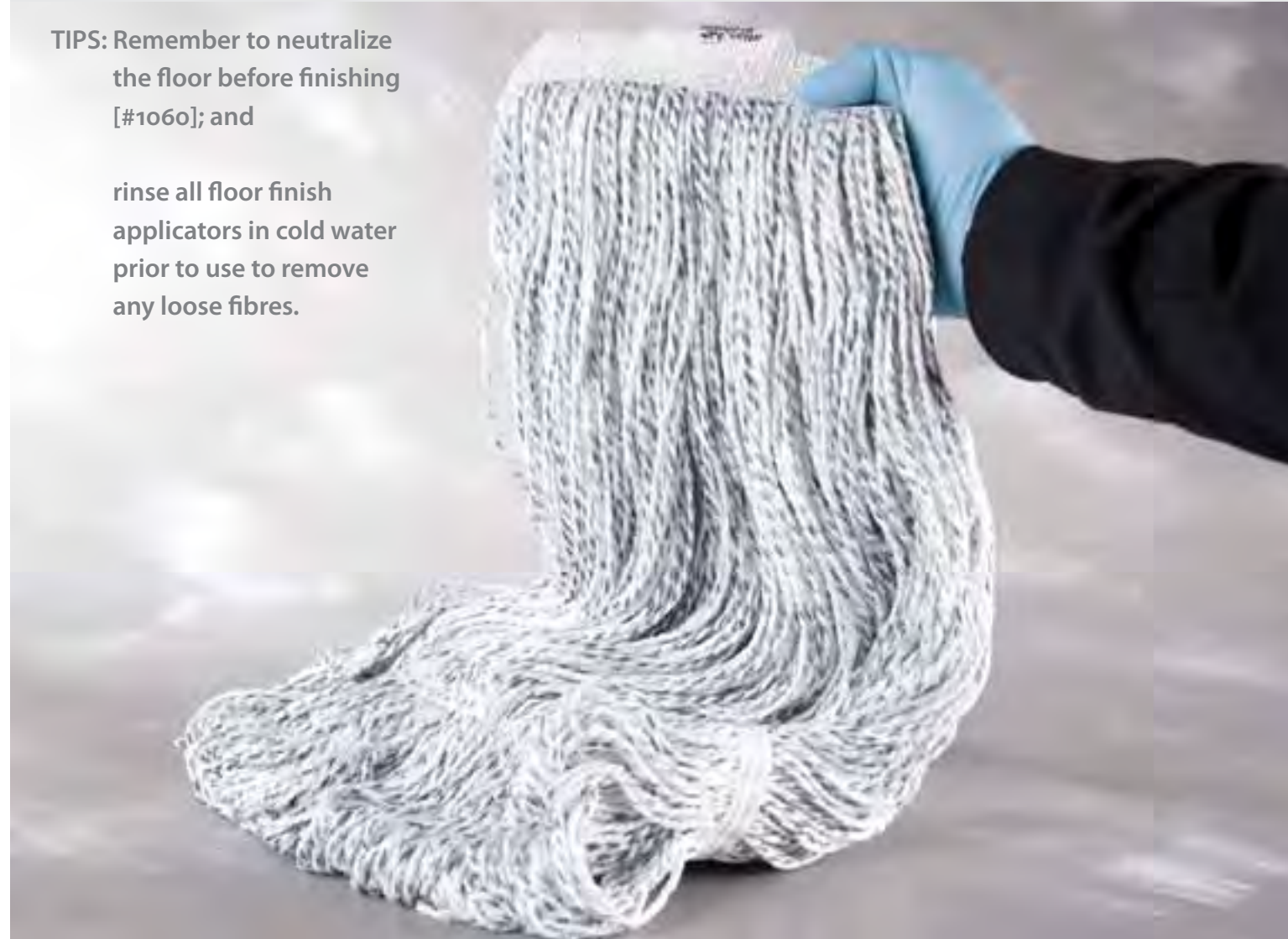
◆ FINISH APPLICATORS

Protect your investment: go with the best

Finishing a floor is expensive. The mop you use should be the very best that's available because lint-off during the application of high-gloss finishes can ruin your day and cost money.

TIPS: Remember to neutralize the floor before finishing [#1060]; and

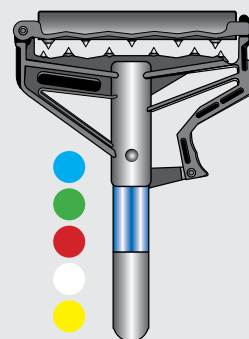
rinse all floor finish applicators in cold water prior to use to remove any loose fibres.



SATIN FINISH™

This satin finish mop is made from premium nylon, monofilament yarn for applying high-gloss floor finishes. This mop is lint free. The monofilament nylon is formulated to release approximately 97% of the floor finish upon contact, reducing waste and saving money.

description	md	lg	xl	pack
satin finish	1752	1753	1756	10



USE THIS HANDLE

All Atlas Graham finish mops are narrow band. The Ez-change™ handle is the perfect partner for all narrow band mops.

◆ FINISH APPLICATORS

Traditional finish mops

These finish mops have been around a long time and have earned the trust of cleaning professionals.

TUFFSTUFF™ LOOPED FINISH MOP

Our Tuffstuff, candy stripe, finish mops have the same durable, looped-end construction as Tuffstuff wet wash mops; the difference is in the yarn. These finish mops are made of a rayon-synthetic yarn that is tightly twisted and ideal for finish application. As an added feature, the tailband has thoughtfully been sewn on the inside of the mop so that it won't cause streaking during finish application.

description	sm	md	lg	pack
narrow band	1761	1762	1763	10



TRADITIONAL CUT-END FINISH MOPS

Available in either fine string cotton or rayon, these conventional cut-end mops are the traditional choice for finish application. This tightly twisted 'hard string' yarn prevents lint-off and releases the floor finish quickly.

description	450 g	550 g	650 g	pack
cotton	4416	4420	4424	10
rayon	3816	3820	3824	



DYNEL® APPLICATORS

These handy applicators are made from Dynel, a synthetic material that absorbs and releases floor finish with virtually no lint-off. They can be attached to any standard acme-thread handle. They are available in 10- or 16-inch widths, complete with wood block, or as refills only. Note: Do not use this product with urethane-based floor finishes.

description	10 in.	16 in.	pack
complete block/pad	34811	34916	10
refill pad	34800	34900	



HANDLES

Narrow band wet mops

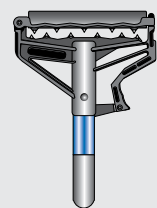
Ez-change™ and Quickway™ handles partner with narrow band wet mops. Both options offer a **no-touch** method of removing a soiled wet mop.



HANDLES

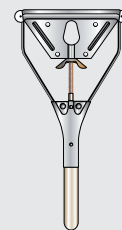
Wide band wet mops

For wide band wet mops, the Jaws™ connector is the recognized industry standard.



EZ-CHANGE™

The no-touch connector is made from high-impact polymers. It is considered our premium connector for narrow band wet mops. Handle options include fibreglass, aluminum, and wood.



QUICKWAY™

This is the tried and tested, classic wing nut all-metal connector for narrow band mops. The threaded wing nut is less prone to stripping while still offering a quick way to replace the mop.

handle	colour	54 in.	60 in.	pack
fibreglass	blue	16574	16575	10
	green	16674	16675	
	red	16474	16475	
	white	16774	16775	
	yellow	1674	1675	
aluminum	-	-	1680	
wood	-	1685	-	

handle	colour	54 in.	pack
ECM†	black	4754	10
wood	natural	4854	

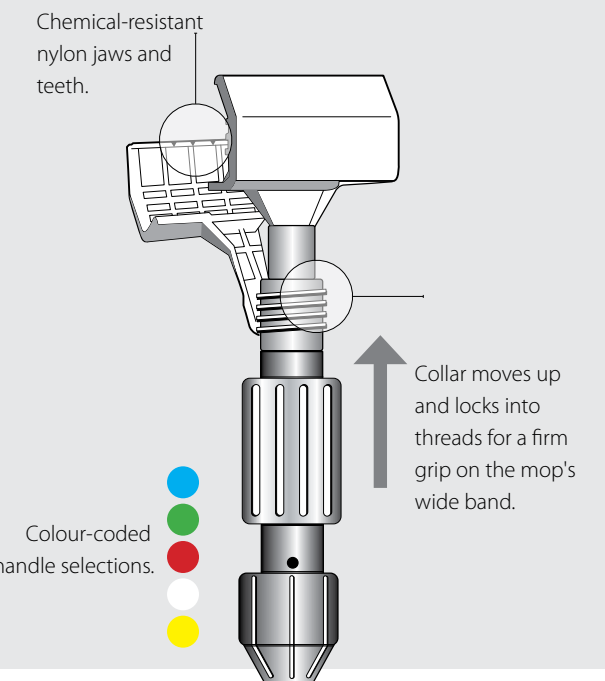
† epoxy-coated metal

Tip: Choose a handle that is just under the user's chin.

JAWS™

Specially formulated, high-quality nylon connector opens wide to make changing wide band wet mops simple. Collar secures with threads and provides firm pressure to hold all wide band headbands.

handle	colour	54 in.	60 in.	pack
fibreglass	blue	-	84501	10
	green	-	84601	
	red	-	84401	
	white	-	84701	
	yellow	-	8801	
aluminum	-	1654	1660	
wood	-	1554	1560	
replacement head only			1650	



SPONGE MOPS

These thirsty sponge mops are versatile

These sponge mops can be used on all kinds of surfaces, from floors to walls.

SPONGE & ROLLER MOP

The sponge mop includes a green scrubbing strip and thicker cellulose sponge for improved durability. The heavy-duty roller mop comes with a 12-inch wide cellulose sponge, zinc-plated steel frame and a 48-inch aluminum handle.

item	sponge mop	pack
70	complete	10
174	mop refill	12

item	roller mop	pack
73	roller complete	6
173	refill roller - 12 in.	



FLOOR SIGNS

Floor signs alert the public to the dangers of slippery, wet floors or other hazards that pose a safety risk. The 24-inch tall signs fold for convenient storage and are printed on both sides in English, French and Spanish.

item	description	pack
86097	wet floor - trilingual	10
86098	caution - trilingual	



NEUTRALIZER

Use pre-measured packet of neutralizer, 23 litres of water and one mop to neutralize the surface after floor stripping. The floor will start with a proper pH of 7-8 for optimum finish performance. This product also neutralizes urine in washrooms to prevent odours and permanent damage to the floor.

item	description	pack
1060	72 packets, 1 oz.	1



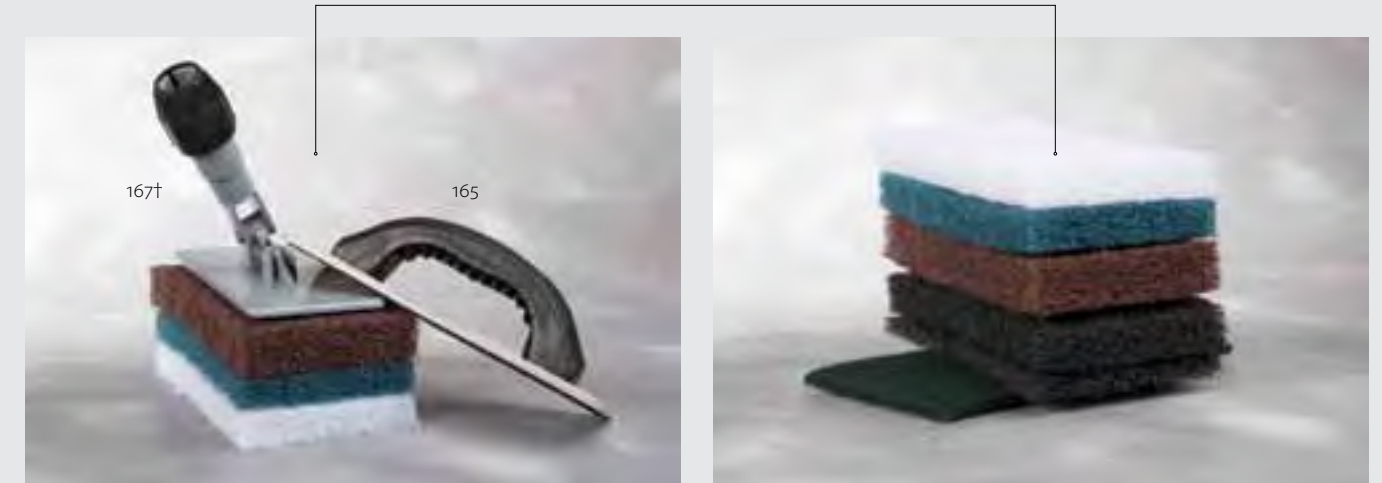
TIP: Remember to neutralize the floor before finishing.

PADLOK™ PAD HOLDERS

Scrub away dirt and grime

These pads pack a lot of scrubbing action. They can be used on floors or walls to clean hard surfaces.

Tools and replacement pads.



PADLOK™ PAD HOLDERS

The three-inch by nine-inch Padlok tool holders offer a multitude of possible uses. Choose from the handheld version or our swivel tool with universal locking collar then pair it with the 10-inch utility pad of your choice and scrub away dirt and grime.

item	description	pack
165	hand held	2
166	swivel type	10
167†	swivel - w/pads	1

†Nº167 c/w 1-white, 1-blue, 1-brown pad

UTILITY CLEANING PADS

These 10-inch by 4-inch pads fit the Padlok pad holders above. Choose from five levels of abrasiveness to suit the task at hand.

item	description	pack
690	white – soft	
691	blue – medium	
692	brown – med/stiff	20
693	black – aggressive	
694	black – extra aggressive	
696†	green - scour scrubby	40

† Nº696 is a handheld scrubber and doesn't fit Padlok.

TRAXOFF™

Traxoff's unique pads are aggressive enough to remove black heel marks from floors, but they won't damage floor finishes. This versatile scrubber can also be used to clean metal window frames and many other surfaces. The Traxoff tool is lightweight yet strong, and threads onto any threaded handle.

item	description	pack
470	kit, includes 5 pads	10
471	replacement pads, 20/case	1

